

The Beauty & The Beast «KENYA» TOUR PACKAGE

The unspoiled beaches
Diani, Nyali, and more!



The 2nd highest mountain
in Africa, Mount Kenya



Lake Nakuru with its
famous pink flamingos



The wondrous Maasai Mara National
Reserve and the great migration



But why stop there?! You can also see **THE BEAST** – the health and environmental destruction from mercury use by more than 100,000 small-scale gold mining miners in the safari country!



Alarming gold mining sites in Migori



Unsafe jobs faced by gold traders



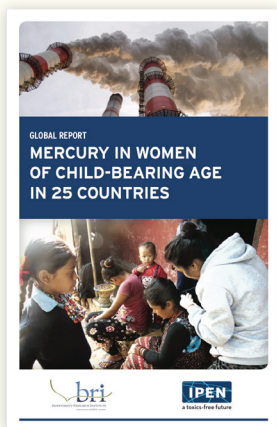
Toxic daily meals of
mercury-contaminated fish



Adversity faced by
the impacted communities

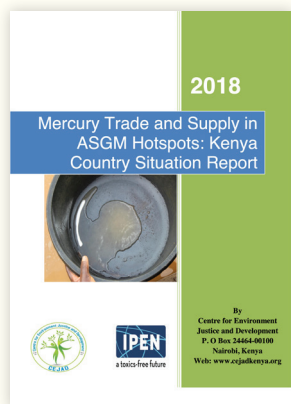
Visit Kenya and confront the sobering aspects of ↑

THE BEAST



Mercury in Women of Child-Bearing Age in 25 Countries

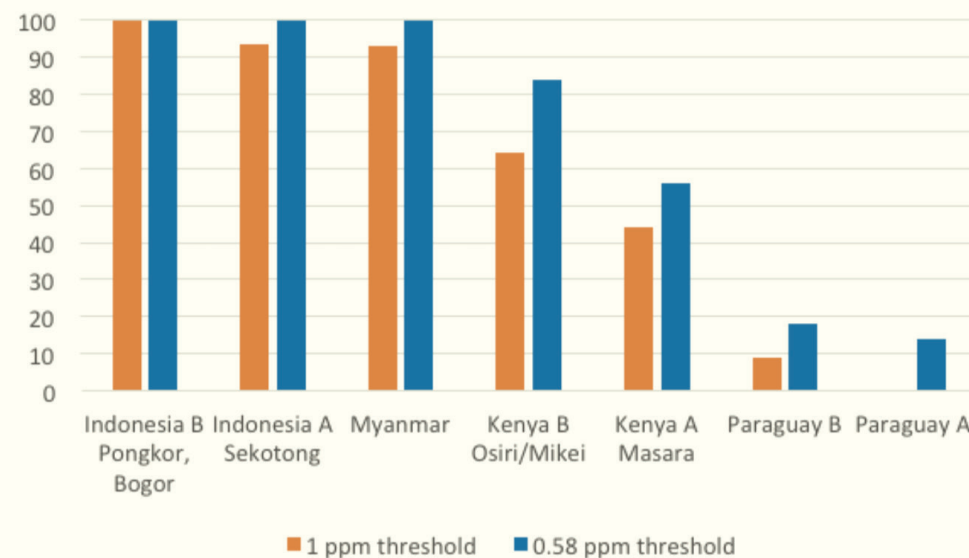
IPEN.org/mercury-and-women



Mercury Trade and Supply in ASGM Hotspots: Kenya Country Situation Report

IPEN.org/conferences/mercury-treaty-cop2

Figure 15 from Mercury in Women of Child-Bearing Age in 25 Countries



Percentage of small-scale gold mining related hair samples **exceeding** the mercury (Hg) reference level of 1 ppm and the 0.58 ppm (proposed) level.

1 ppm corresponds closely with the U.S. EPA's reference dose (RfD) of 0.1 µg/kg bw/day and a blood mercury concentration of 4 - 5 µg/L. Recent studies conclude that negative developmental effects may occur at even lower levels and that a threshold level of 0.58 ppm should be adopted as the level below which impacts on the developing fetus are negligible.

Mercury use for gold mining is currently an ALLOWABLE USE in the Minamata Convention.
END MERCURY TRADE FOR ASGM!

Let Kenya continue being the paradise it really is!

For more information, contact:

ipen@ipen.org cejadkenya@gmail.com

